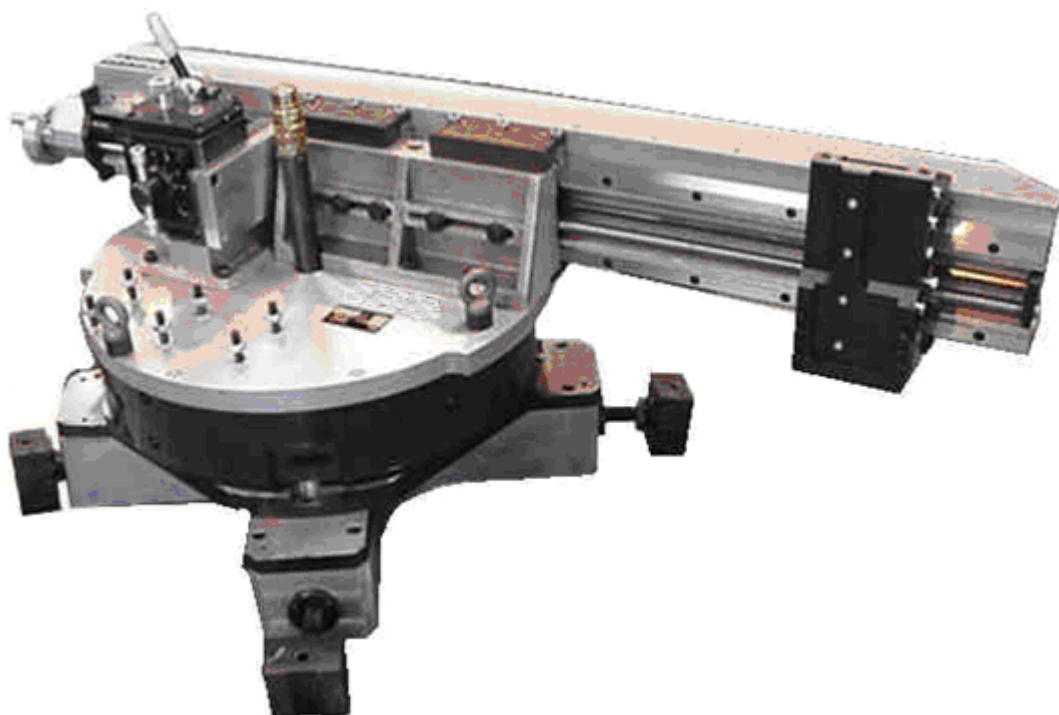


PETRACARBON PTE LTD

1001 JALAN BUKIT MERAH
#04-01/06 REDHILL INDUSTRIAL ESTATE
SINGAPORE 159455
Fax: (65) 6273 3121 Tel: (65) 6271 0800
Website: www.petracarbon.com

J2000i Flange Facer 600mm ~ 2000mm (24" ~ 80")

BOLTITE



- ❖ Linear ball guideways and ballscrew
 - ❖ Facing with continuous groove (8 feeds)
 - ❖ Boring with continuous groove (8 feeds)
 - ❖ Power Feed Toolpost with 360° swivel
 - ❖ RTJ 'V' grooves
 - ❖ Lens Ring Joints
 - ❖ Ring Joints
 - ❖ Weld Preps
 - ❖ Finishes from: 0.6µm ~ 8µm (facing)
0.25µm ~ 32µm (boring)
- } All under power feed
(No additional kits required)

PETRACARBON PTE LTD

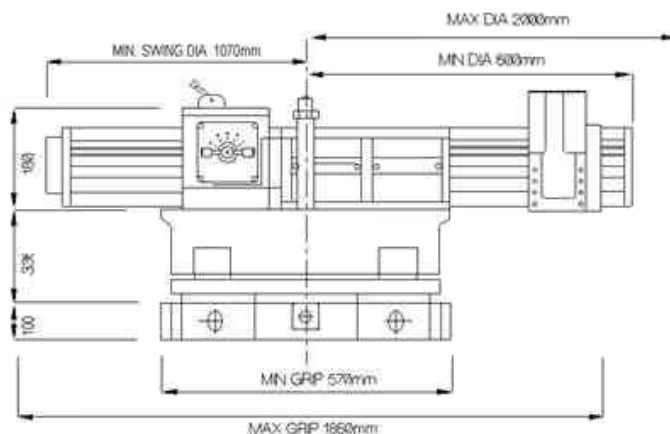
1001 JALAN BUKIT MERAH
 #04-01/06 REDHILL INDUSTRIAL ESTATE
 SINGAPORE 159455
 Fax: (65) 6273 3121 Tel: (65) 6271 0800
 Website: www.petracarbon.com

J2000i Flange Facer – Technical Specification

General Description

J2000i Flange Facer is an internally mounted machine with four speed continuous feed gearbox, facing/boring and weld prep machine. This Facer has a unique twin shaft power feed long series tool post. A separate power take off permits the use of attachments for grinding/milling (options). J2000i runs on precision ball lead screw system.

Dimensions



Range

- ❖ Min. facing dia. : 600mm (24")
- ❖ Max. facing dia. : 2000mm (80")
- ❖ Min. clamping dia. : 570mm (22.5")
- ❖ Max. clamping dia. : 1850mm (73")
- ❖ Min. swing dia. : 1070mm (42")
- ❖ Toolpost travel : 100mm (4")
(auto feed @ 360°)

Drive

- ❖ Pneumatic @ 90psi (6bar) : 2 off 1.5Hp (1.11Kw)
- ❖ Air consumption / supply required : 96scfm (2.69m³/m) @ 90psi (6bar)
- ❖ RPM : 20 approx. maximum

Feed Rates

- ❖ Facing feeds (in) : 0.15, 0.23, 0.41, 0.81mm
- ❖ Facing feeds (out) : 0.10, 0.19, 0.36, 0.71mm
- ❖ Boring feeds (down) : 0.05, 0.08, 0.13, 0.25mm
- ❖ Boring feeds (up) : 0.03, 0.07, 0.10, 0.20mm

Weights

- ❖ Machine Weight : 200kg (440.9lb)
- ❖ Shipping Weight (machine only) : 573kg (1263.2lb)
- ❖ Shipping Dim. (machine only) (L x W x H) : 134.5cm x 71.0cm x 75.0cm (53"x28"x30")
- ❖ Shipping Weight (1m base only) : 180kg (396.8lb)
- ❖ Shipping Dim. (1m base) (L x W x H) : 117.0cm x 117.0cm x 18.0cm (46"x46"x7")

Optional

- ❖ 'V' Groove measuring trammels
- ❖ 20° lens ring polishing kit
- ❖ Tube sheet back facing kit
- ❖ Spare kit
- ❖ Hydraulic motor
- ❖ Hydraulic power pac