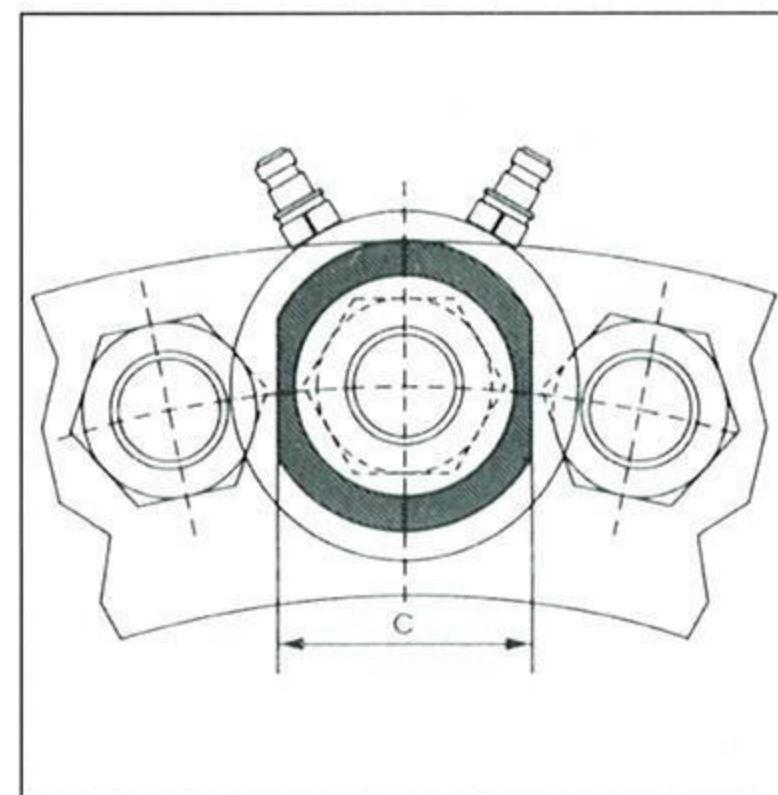
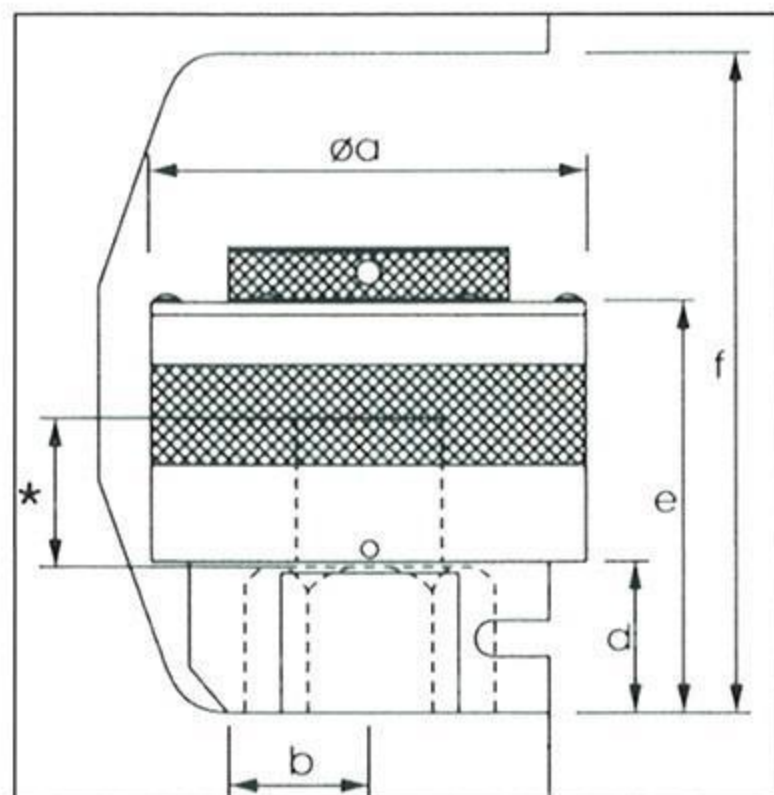


Tensioner Ref.	BOLT DIA		TOOL HYD AREA		MAX LOAD		WEIGHT		a	b	c	d	e	f					
	in	mm	in ²	mm ²	TONF	KN	lb	Kg	mm	mm	mm	mm	mm	mm					
BT0	3/4"	M20	1.48	954	14.4	143.5	2.9	1.3	66.0	25.0	62.0	34.5	91.5	129.0					
	7/8"	M22								25.0	62.0	34.5	91.5	132.0					
BT1	1"	M24	2.95	1903	28.6	284.96	7.7	3.5	90.0	31.9	68.0	43.0	123.5	167.0					
	1 1/8"									31.7	80.0	46.0	126.5	174.0					
BT2	1"	M24	4.74	3058	46.0	458.3	12.1	5.5	109.0	30.0	75.0	38.0	128.6	172.0					
		M27																	
	1 1/8"	M30								30.2	80.0	41.0	131.6	180.0					
	1 1/4"	M33								36.9	88.0	44.0	134.6	186.0					
BT3	1 1/4"	M33	6.90	4452	67.0	667.8	15.4	7.0	126.0	36.9	88.0	44.0	137.0	188.0					
		M36								38.3	96.0	47.0	140.0	194.5					
	1 1/2"	M39								42.0	96.0	50.4	143.4	196.0					
	1 5/8"	M42								41.1	108.0	53.5	146.5	207.5					
BT4	1 1/2"	M39	10.41	6716	101.1	1007.3	22.1	10.0	146.0	42.0	113.0	50.0	149.0	207.0					
		M42								45.5	113.0	53.5	152.5	213.5					
	1 3/4"	M45								52.1	118.0	57.0	156.0	220.0					
		M48								51.0	114.0	60.0	159.0	226.0					
	2"									52.0	120.0	63.0	162.0	233.0					
BT5	2"	M52	13.45	8677	130.6	1301.2	33.1	15.0	174.0	52.0	132.0	63.0	163.0	235.0					
	2 1/4"	M56								58.0	138.0	69.5	169.0	247.0					
BT6	2 1/4"	M56	15.71	10135	152.5	1514.5	37.5	17.0	184.0	58.0	138.0	69.5	169.4	249.0					
		M60																	
	2 1/2"	M64								63.20	153.0	76.0	175.0	262.0					
BT7	2 3/4"	M72	21.67	13980	210.5	2097.3	57.3	26.0	220.0	85.0	157.0	82.0	182.0	275.0					
		M76								80.0	180.0	89.0	189.0	288.0					
	3"																		
BT8	3"	M76	25.49	16445	247.5	2466.0	65.0	29.5	240.0	80.0	180.0	89.0	192.5	291.5					
		M80																	
	3 1/4"	M85								95.0	190.0	95.0	198.5	303.5					
BT9	3 1/2"	M90								102.5	205.0	101.0	204.5	316.5					
	3 3/4"	M95	34.09	21991	331.0	3297.9	86.0	38.0	272.0	93.6	200.0	107.0	211.0	330.0					
	4"	M100								103.0	210.0	114.0	218.0	345.0					
BT10	4 1/4"	M105	40.15	25935	389.9	3884.8	108.0	49.0	294.0	112.0	225.0	120.0	228.0	365.0					
		M110																	
	4 1/2"	M115								118.0	236.0	126.0	235.0	380.0					

Notes: 1. Product development is constantly taking place and dimensions may alter without prior notice. 2. Weight – load cell, bridge and nut rotating disc. 3. Max. tool operating pressure – 21,750 psi (1500 bar).



- Primary Tool
To cover a wide range of bolts with the minimum number of tools (4 load cell covers 15 bolt sizes).
- Secondary Tools
To provide the smallest possible tool for a particular bolt size thus making it the most economic.
- Sizes available on request.

*Bolt protrusion above head of nut equals 1x bolt diameter (minimum).